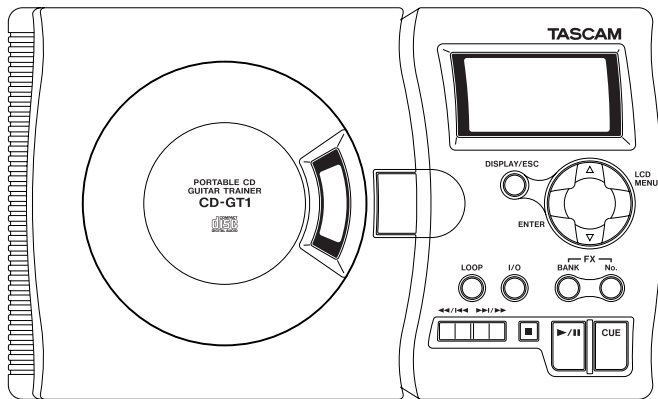


TASCAM
TEAC Professional Division

CD-GT1

Portable CD Guitar Trainer



This appliance has a serial number located on the rear panel. Please record the model number and serial number and retain them for your records.

Model number _____

Serial number _____

OWNER'S MANUAL

D00716500B

Important safety precautions



CAUTION: TO REDUCE THE RISK OF ELECTRIC SHOCK, DO NOT REMOVE COVER (OR BACK). NO USER-SERVICABLE PARTS INSIDE. REFER SERVICING TO QUALIFIED SERVICE PERSONNEL.



The lightning flash with arrowhead symbol, within an equilateral triangle, is intended to alert the user to the presence of uninsulated “dangerous voltage” within the product’s enclosure that may be of sufficient magnitude to constitute a risk of electric shock to persons.



WARNING: TO PREVENT FIRE OR SHOCK HAZARD, DO NOT EXPOSE THIS APPLIANCE TO RAIN OR MOISTURE.

FOR U.S.A.

TO THE USER

This equipment has been tested and found to comply with the limits for a Class B digital device, pursuant to Part 15 of the FCC Rules. These limits are designed to provide reasonable protection against harmful interference when the equipment is operated in a commercial environment. This equipment generates, uses, and can radiate radio frequency energy and, if not installed and used in accordance with the instruction manual, may cause harmful interference to radio communications. However, there is no guarantee that interference will not occur in a particular installation. If this equipment does cause harmful interference to radio or television reception, which can be determined by turning the equipment off and on, the user is encouraged to try to correct the interference by one or more of the following countermeasures.

- a) Reorient or relocate the receiving antenna
- b) Increase the separation between the equipment and receiver.
- c) Connect the equipment into an outlet on a circuit other from that to which the receiver is connected.
- d) Consult the dealer or an experienced radio/TV technician for help.

CAUTION

Changes or modifications to this equipment not expressly approved by TEAC CORPORATION for compliance could void the user’s authority to operate this equipment.

- 1 Read these instructions.
- 2 Keep these instructions.
- 3 Heed all warnings.
- 4 Follow all instructions.
- 5 Do not use this apparatus near water.
- 6 Clean only with dry cloth.
- 7 Do not block any ventilation openings. Install in accordance with the manufacturer's instructions.
- 8 Do not install near any heat sources such as radiators, heat registers, stoves, or other apparatus (including amplifiers) that produce heat.
- 9 Do not defeat the safety purpose of the polarized or grounding-type plug. A polarized plug has two blades with one wider than the other. A grounding type plug has two blades and a third grounding prong. The wide blade or the third prong are provided for your safety. If the provided plug does not fit into your outlet, consult an electrician for replacement of the obsolete outlet.
- 10 Protect the power cord from being walked on or pinched particularly at plugs, convenience receptacles, and the point where they exit from the apparatus.
- 11 Only use attachments/accessories specified by the manufacturer.
- 12 Use only with the cart, stand, tripod, bracket, or table specified by the manufacturer, or sold with the apparatus. When a cart is used, use caution when moving the cart/apparatus combination to avoid injury from tip-over.



13 Unplug this apparatus during lightning storms or when unused for long periods of time.

14 Refer all servicing to qualified service personnel. Servicing is required when the apparatus has been damaged in any way, such as power-supply cord or plug is damaged, liquid has been spilled or objects have fallen into the apparatus, the apparatus has been exposed to rain or moisture, does not operate normally, or has been dropped.

- Do not expose this apparatus to drips or splashes.
- Do not place any objects filled with liquids, such as vases, on the apparatus.
- Do not install this apparatus in a confined space such as a book case or similar unit.
- The apparatus draws nominal non-operating power from the AC outlet with its POWER switch in the off position.

NOTES

The CD-GT1 cannot play unfinalized CD-R/RW discs. In addition, some finalized CD-R/RW discs may be unplayable on the CD-GT-1.

To avoid the possibility of slight noise when you use the unit with the AC adapter, remove the batteries before connecting the AC adapter. If any batteries are accidentally left in the unit, you should always switch the unit off when changing between AC adapter and battery power.

The microphone input is unbalanced. Use an unbalanced microphone cable fitted with a 1/4" plug.

Ni-MH batteries may exhibit reduced performance in an environment under 10°C (50F). Also, if these batteries are not used for some time after charging, they may also exhibit reduced performance.

The performance of alkaline batteries also depends on temperature and time since manufacture (low temperatures and longer periods mean shorter battery life, regardless of the battery indicator as shown on the display).

Bear this in mind when operating the unit, and use freshly recharged Ni-MH batteries, new alkaline batteries or use an AC adapter if battery life seems inadequate.

Important Safety Instructions

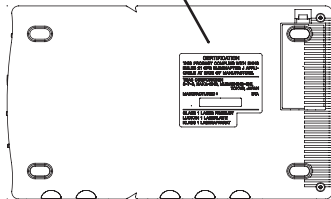
Safety Information

This product has been designed and manufactured according to FDA regulations "title 21, CFR, chapter 1, subchapter J, based on the Radiation Control for Health and Safety Act of 1968", and is classified as a class 1 laser product. There is no hazardous invisible laser radiation during operation because invisible laser radiation emitted inside of this product is completely confined in the protective housings. The label required in this regulation is shown here.

CAUTION

- DO NOT REMOVE THE PROTECTIVE HOUSING USING A SCREWDRIVER.
- USE OF CONTROLS OR ADJUSTMENTS OR PERFORMANCE OF PROCEDURES OTHER THAN THOSE SPECIFIED HEREIN MAY RESULT IN HAZARDOUS RADIATION EXPOSURE.
- IF THIS PRODUCT DEVELOPS TROUBLE, CONTACT YOUR NEAREST QUALIFIED SERVICE PERSONNEL, AND DO NOT USE THE PRODUCT IN ITS DAMAGED STATE.

Optical pickup: Type KSM-900AAA
Manufacturer: SONY CORPORATION
Laser output: <1 mW play on the objective lens
Wavelength: 775—816 nm



First steps with your CD-GT1	6
Making connections.....	7
Adjusting the balance.....	8
Using the menu system	9
Using the CD player	10
Pitch and tempo changes	11
Using effects.....	12
Effect presets and parameters	13
Using the tuner	14
Facts and figures (specifications).....	15

First steps with your CD-GT1

About this manual

When we refer to a key or connector or control on the CD-GT1, we write it like this: **PLAY**.

When we refer to an item shown on the display, we write it like this: MENU.

Inserting batteries

The CD-GT1 uses four AA (SUM-3) batteries (not supplied). We recommend the use of rechargeable Ni-MH batteries (alkaline batteries may also be used).

- Always use batteries of the same type.
- Always replace all batteries together.
- If you are not going to use the CD-GT1 for some time, remove the batteries.
- Place the batteries following the + and - markings inside the battery compartment.
- Maximize battery life by using the unit in the following tempera-

ture range: 10°C to 30°C (50°F to 86°F).

- Always dispose of used batteries as recommended by your local authorities.

When the battery level drops, the unit automatically shuts down and must be restarted with the **POWER** switch after the batteries have been replaced.

Note that the battery indicator on the display only provides a rough estimate of remaining battery life, and under some circumstances, there may not be enough power in the batteries to power the CD-GT1, despite the battery power indication on the display.

Using an AC adapter

Only use a TASCAM PS-PS5 adapter (not supplied). Using another type of AC adapter may damage your CD-GT1.

Always make sure that the AC voltage matches the voltage written on the AC adapter.

Switching on the unit

The CD-GT1 has two power switches. Use the first **POWER** switch (sliding switch) to turn the power to the whole unit on and off.

The second switch, **GUITAR**, controls the power to the **GUITAR/INPUT** jack and effect unit. If this section is off, you cannot use this jack, or use any of the guitar/mic-related menu systems (effect and tuner).

Also note the **HOLD** switch that locks the CD-GT1's controls and keys when it is in the **ON** position.

Auto power-save

If the unit is powered using batteries for more than 5 minutes in stop mode or with no disc loaded or opened, the CD player shuts down (the CD part of the display goes blank), but you can still use the guitar section.

Restart the CD player alone by using the **PLAY** key (or use the **POWER** switch if both the CD and guitar sections are turned off).

Inputs

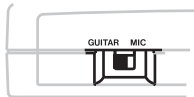
Connecting a guitar

To connect a guitar or bass guitar to the unit, simply connect one end of the guitar cord to the guitar, and connect the other to the **GUITAR/MIC IN** jack of the CD-GT1.

If you use effects pedals or stomp boxes, you can connect the output of these to the CD-GT1 (remember that the CD-GT-1 has its own effects).

Set the **GUITAR/MIC** switch to **GUITAR**.

Make sure the **GUITAR** power button is pushed in.



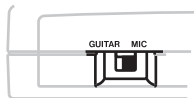
WARNING

NEVER connect a guitar amplifier to the CD-GT1's **GUITAR/MIC** input, as you will damage your equipment if you do this.

Connecting a microphone

Connect a suitable microphone (ask your TASCAM dealer if you are not sure) to the **GUITAR/MIC IN** jack of the CD-GT1.

Set the **GUITAR/MIC** switch to **MIC**.



Connecting a stereo line source

You can also connect a stereo line source such as the outputs from a synthesizer, a guitar preamplifier or rack-mount effects unit or a cassette deck, etc. to the CD-GT1. Use the **LINE IN** mini-jack beside the **GUITAR/MIC IN** jack.

WARNING

You should NEVER connect the speaker outputs of a guitar amplifier to anything except speakers. If you are in any doubt at all about what you can connect to your CD-GT1, ask someone who knows.

Connecting a footswitch

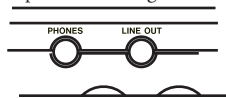
You can connect a footswitch to the CD-GT1 to step through the effect slot settings, or to cue the CD player “hands-off” (see later in this manual for details).

To avoid problems with your CD-GT1, use only a TASCAM RC-30P footswitch (or similar non-latching “push-to-make” footswitch) connected to the **FOOT** jack.

Outputs

Connect the unit to a stereo system's AUX input, or mixer input, etc. using a suitable stereo cable (not supplied), connected to the CD-GT1's **LINE OUT** stereo mini-jack.

Connect a pair of headphones (not supplied) to the **PHONES** stereo mini-jack for private listening.



Adjusting the balance

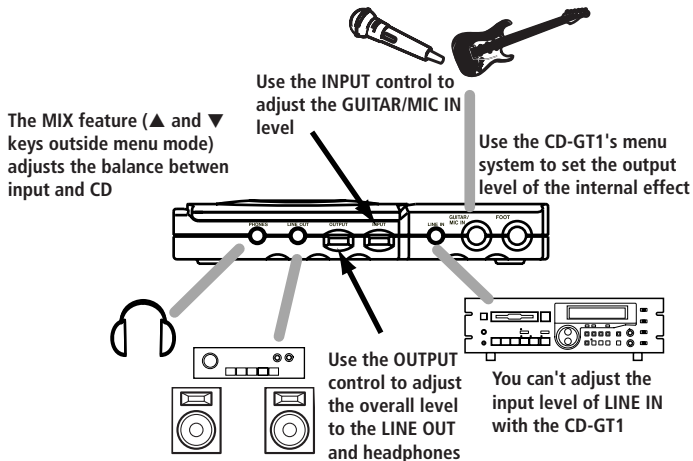
Inputs

The CD-GT1 has three input sources:

- the CD being played
- the guitar or microphone connected to the **GUITAR/MIC IN** jack
- any stereo input connected to the **LINE IN** jack.

The first and last of these cannot have their input levels changed by the CD-GT1 (but see below for details of how to balance the CD with the input).

- Use the level control of the device connected to **LINE IN** to adjust the level of this source (remember that this source cannot be effected by the CD-GT1's effects).
- Use the CD-GT1's **INPUT** control to adjust the level of the guitar or mic before it is sent to the effect.
- When a menu is not selected, you can use the **▲** and **▼** keys to set the relative balance of the guitar or microphone (but not the **LINE IN** source) compared to the output from the CD player. This MIX value



can be set to between -5 and $+5$.

Remember that this is only possible when not in menu mode.

- Use the CD-GT1's menu system to adjust the output level of the effect.

Outputs

There are two outputs: the line and the headphones. These cannot have their levels set separately—use the **OUTPUT** control to set the overall output level.

See the table on this page for details of the different menus and their settings.

To enter the menu system, press the **LCD MENU** key until the menu you want appears (shown in a flashing reversed box) and the first menu item is shown on the main part of the screen.

Use the “up” or “down” keys (▲ and ▼) to set the value of the first menu item.

Note that you do not need to press **ENTER** to set the values. The settings change as soon as the key is pressed.



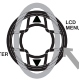
Press **ENTER** to move to the next menu item in the list.

Press **MENU** to move to the next menu and its first menu item.

Exit the menu system using the **DISPLAY/ESC** key.

NOTE

The **TUNER** menu requires you to press **ENTER** after the **TUNER** menu is shown on screen (as the effect sound is cut when the tuner is operational).

Menu	Menu item	Values	Notes
			
EFFECT	EFF	ON/OFF	turns effect on or off
	LIB	00 to 42	preset number
	Parameter	—	depends on effect type
	LVL	0 to 64	effect output level
PITCH	PIT	0 to -50% (pitch) or 0, -8, -16, -32 and -50 (SSA)	sets pitch shift or slow speed audition values
	SSA	SSA ON/OFF	Sets slow speed audition on or off
KEY	KEY	#6 to ♭6 (or SSA)	Sets pitch shift in semitones
	FINE	-50 to +50 (or SSA)	sets pitch shift in cents
MENU	PLAY	ALL/SGL	all or single play
	CUE	CUE/FLS	cue or “flash play” operation
	FOOT	EFF/CUE	sets footswitch mode: either step through the effect slots, or cueing
TUNER	AT/MT	E2 to E5 (when tuning)	
	MODE	AT/MT	automatic or manual tuning
	CAL	435 to 445	calibration in Hz

Using the CD player

The CD-GT1's CD player works in much the same way as other CD players, with a few minor differences and special features, as explained on this page.

Load CDs label side up (shiny side down) in the CD-GT1. Open and close the player door by hand.

Playback

Press the play/pause key (▶/⏸) key to start playback and to pause playback.

Press the stop key (■) to stop playback.

When you use the player with batteries, starting and stopping playback take longer than under AC power (this saves battery power).

Display

Use the **DISPLAY/ESC** key to change the display between: track elapsed time, track remaining time and total remaining time (you cannot do this in menu mode).

Skipping between tracks

Use the two skip/search keys (marked as ◀◀/⏮ and ▶▶/⏭) to move back and forward a track at a time by pressing and releasing the appropriate key.

Searching within tracks

Use the skip/search keys to search within the disc by pressing and holding the appropriate key.

The CUE key

The **CUE** key is a special feature of the CD-GT1. When you press this key, the playback position returns to the last point where playback started.

What happens next depends on the CUE menu item setting (in the MENU menu). If this is set to CUE, playback is paused at the cue point, but if it is set to FLS, playback restarts from the cue point (if **CUE** is pressed from play or pause).

TIP

*With a footswitch connected, you can use this instead of the **CUE** key for hands-free operation (set the FOOT menu item to CUE).*

Looping (track)

Using the PLAY menu item, set SGL (single play). Press the **LOOP** key so that you see LOOP 1 on the display (bottom left). The current track will repeat.

Looping (disc)

Using the PLAY menu item, set ALL (play all the disc). Press the **LOOP** key so that you see LOOP alone on the display (bottom left). The whole disc will repeat.

Looping (I/O points)

Use the **I/O** key to set the start (in) point of the loop, then use the key to set the out point. The section between the points will repeat seamlessly.

Pressing the **I/O** key again clears the loop points and cancels loop mode.

With these points set (I-O shown on the display), you can restart the I/O loop mode (if it has been canceled) using the **LOOP** key.

Canceling looping

Press the **LOOP** key so that LOOP does not show on the display (bottom left).

There are three modes for changing the way a CD is played back.

NOTE

Only one of these modes can be active at a time.

These modes help you to play along at a different key or a different tempo so that you can learn your favorite riffs and licks.

TIP

Use these together with the looping function to help your practice.

KEY mode

The “key” mode changes the key of the music by six semitones up or down. The tempo does not change.

The value is set in semitones and cents (1/100ths of a semitone) shown as $b6$ to #6. When both semitones and cents are 0, the KEY mode is off (if SSA is on, this is also off).

When this mode is on, the display shows KEY.

Use this mode when you find the key

of the CD track difficult to play or sing in.

SSA mode

The SSA (Slow Speed Audition) mode slows down the tempo without changing the key. The settings are 0 (off), -8, -16, -32 and -50 (all percent).

When this mode is active, the display (left side) shows SSA. Use this mode to practice difficult fast licks.

PITCH mode

The pitch mode changes both pitch and tempo in 1% steps, down to -50%. 0% is the “off” setting.

When this mode is active, the display shows PITCH.

Making settings

Use the menu system to turn SSA on or off (PITCH menu) and then set the value for the pitch or SSA settings (PITCH menu again), *or* with SSA off, choose KEY from the next (KEY) menu and make the KEY (semitone) and FINE settings.

Remember!

- Shift pitch alone = KEY
- Slow down and keep pitch = SSA
- Slow down and drop pitch = PITCH

Using effects

How effects work

There are two effect “banks”: A and B, each with five “slots” numbered from 1 through 5 where you can store your own effect settings.

Effects are created from the 43 preset effects available (30 guitar and 13 vocal). When a bank and slot are selected, if a preset effect is recalled and edited, that bank slot is automatically filled with the edited effect.

Storing your own effect settings in a bank slot



Press the **BANK** key to select either the A or B bank as shown on the display.

Press the **No.** key to select the bank slot (1 through 5) as shown on the display.



Press the **LCD MENU** key until **EFFECT** appears on the display.



Use the **▲** key to turn the effect ON.



Press **ENTER**, and then select the preset effect (00 through 42) with the **▲** and **▼** keys.

NOTE

If there were any settings in the selected bank slot to start with, they will be overwritten when you recall a library entry.

Press **ENTER** once more to start editing the parameters with the **▲** and **▼** keys (see the table later for details of these parameters).

The last parameter is always **LVL** (the output level from the effect unit (0 to 64). This is only available when the effect is active and is bypassed with the effect off.



Set the level and then press the **DISPLAY/ESC** key to exit the effect settings. The effect settings you have made are automatically stored in the bank slot you first chose.

Recalling an effect with your settings

When you have stored the effect settings in a bank slot as described above, you can recall them simply pressing the **BANK** and **No.** keys to select the appropriate bank slot (you should also make sure that the effect is switched on).

TIP

If you have a footswitch connected and the FOOT menu item is set to EFF, you can step through the bank slots by pressing the footswitch.

The preset effects can be divided into three categories:

Distortion	Clean sound	Vocal
00 DIST-TONE-FLA-REV	15 COMP-TONE-FLA-REV	30 De-esser
01 DIST-TONE-FLA-DLY	16 COMP-TONE-FLA-DLY	31 Chorister
02 DIST-TONE-PHA-REV	17 COMP-TONE-PHA-REV	32 Emphasis
03 DIST-TONE-PHA-DLY	18 COMP-TONE-PHA-DLY	33 Shout
04 DIST-TONE-EXC-REV	19 COMP-TONE-EXC-REV	34 Mood Vocal
05 DIST-TONE-EXC-DLY	20 COMP-TONE-EXC-DLY	35 Response
06 DIST-TONE-CHO-REV	21 COMP-TONE-CHO-REV	36 Proclaim
07 DIST-TONE-CHO-DLY	22 COMP-TONE-CHO-DLY	37 Quivering Voice
08 DIST-TONE-TRM-REV	23 COMP-TONE-TRM-REV	38 Duet
09 DIST-TONE-TRM-DLY	24 COMP-TONE-TRM-DLY	39 Lo-Fi Vocal
10 DIST-TONE-VIB-REV	25 COMP-TONE-VIB-REV	40 Megaphone
11 DIST-TONE-VIB-DLY	26 COMP-TONE-VIB-DLY	41 Screaming
12 DIST-TONE-WAH-REV	27 COMP-TONE-WAH-REV	42 Panning Vocal
13 DIST-TONE-WAH-DLY	28 COMP-TONE-WAH-DLY	—
14 DIST-TONE-PIT-DLY	29 COMP-TONE-PIT-DLY	—

As this shows, each of the guitar (distortion and clean) presets has four components, each of which can be adjusted individually and are shown on the display as listed in the table here.

The vocal presets have one parameter each, shown on the display as PAR.

The parameters

DIST Distortion gain

COMP Compressor gain

TONE Tone control

FLA Flanger setting

REV Reverb setting

DLY Delay setting

PHA Phaser setting

EXC Exciter setting

PIT Pitch shifter setting

CHO Chorus setting

TRM Tremolo setting

VIB Vibrato setting

WAH Auto-wah setting

All presets also have a LVL (level) setting from 0 to 64.

Using the tuner

The CD-GT1's built-in guitar tuner has two modes; an automatic mode, where the pitch of the incoming signal is detected and displayed automatically, and a manual mode, where you set the “target” and tune to it.

Press the **MENU** key until the display shows TUNER, and then press **ENTER**.



When you enter the tuner mode, any effect is automatically turned off.

If the tuner is in automatic mode (shown as AT on the display), just play a note on your guitar. The tuner guesses the closest note and shows it on the display. Tune the string roughly so that the right note appears, and then adjust the tuning until the display shows a large center “blob”.

If the tuner is in manual mode (shown as MT on the display), use the ▲ and ▼ keys to set the note on the display, and

then tune as above.

Calibrating the tuner.

Usually, the A above Middle C is tuned to 440 Hz (in most Western music).

There may be times when you need to tune to a different standard (you are playing with another instrument or to a CD which does not use the 440 Hz tuning). Use the tuner's CAL (calibration menu) to set the “reference A” to a tuning between 435 Hz and 445 Hz.

NOTE

*Although you do not need to play a CD when you are tuning, the CD-GT1 must be switched on, and the **GUITAR** button must be pressed in to allow tuning of the guitar plugged into the CD-GT1.*

Facts and figures (specifications)

Disc types	8 cm single, 12 cm CD
AD/DA	16-bit
Digital signal processing	32-bit
Nominal output level (LINE OUT)	-10 dBV
Maximum output level (LINE OUT)	0 dBV (1 Vrms)
Output impedance	1 k Ω
Maximum output level (PHONES)	> 18 mW (into 32 Ω)
Nominal input levels	
LINE IN	-10 dBV
MIC IN	-40 dBV
GUITAR IN	-15 dBV
CD playback characteristics	
Frequency response	20 Hz to 20 kHz \pm 1.0 dB
Dynamic range	> 88 dB
S/N ratio	> 88 dB
THD	< 0.01%

Voltage requirements	DC 9V (PS-PS5 AC adapter)
	AA batteries x 4 (NiMH or alkaline)
Power consumption	4W (PS-PS5 AC adapter)
Dimensions (w x d x h) including feet	232 x 138 x 40 (mm) / 9.1 x 5.4 x 1.6 (in)
Weight (excluding batteries)	620 g / 1 lb, 6 oz

TASCAM
TEAC Professional Division

CD-GT1

TEAC CORPORATION

3-7-3 Nakacho Musashino-shi Tokyo 180-8550 JAPAN
+81-422-52-5082 www.tascam.com

TEAC AMERICA, INC

7733 Telegraph Road Montebello CA 90640 USA
+1-323-726-0303 www.tascam.com

TEAC CANADA LTD.

5939 Wallace Street Mississauga Ontario L4Z 1Z8 CANADA
+1-905-890-8008 www.tascam.com

TEAC MEXICO, S.A de C.V

Campeños No. 184 Colonia Granjas Esmeralda Delegacion Iztapalapa CP 09810 Mexico DF MEXICO
+52-555-581-5500 www.tascam.com

TEAC UK LIMITED

5 Marlin House, Croxley Business Park Watford Hertfordshire WD18 8TE UNITED KINGDOM
+44-1923-438880 www.tascam.co.uk

TEAC DEUTSCHLAND GmbH

Bahnstrasse 12 65205 Wiesbaden-Erbenheim GERMANY
+49-611-71580 www.tascam.de

TEAC FRANCE SA

17 Rue Alexis-de-Tocqueville CE 005 92182 Antony Cedex FRANCE
+33-1-42-37-01-02 www.tascam-europe.com

TEAC ITALIANA S.p.A.

Via C Cantu 11 20092 Cinisello Balsamo Milano ITALY
+39-02-66010500 www.teac.it

TEAC AUSTRALIA PTY., LTD.

280 William St Melbourne Victoria 3000 AUSTRALIA
+61-3-9672-2400 www.teac.com.au

Printed in China M-0776